

INJECTION MOLDING MACHINE



HIGH-END DEDICATED



**HIGH
TECHNOLOGY**



**USER
FRIENDLY**



**HIGH
PERFORMANCE**

F SERIES

PLASTIC INJECTION MACHINE



HIGH
TECHNOLOGY



USER
FRIENDLY

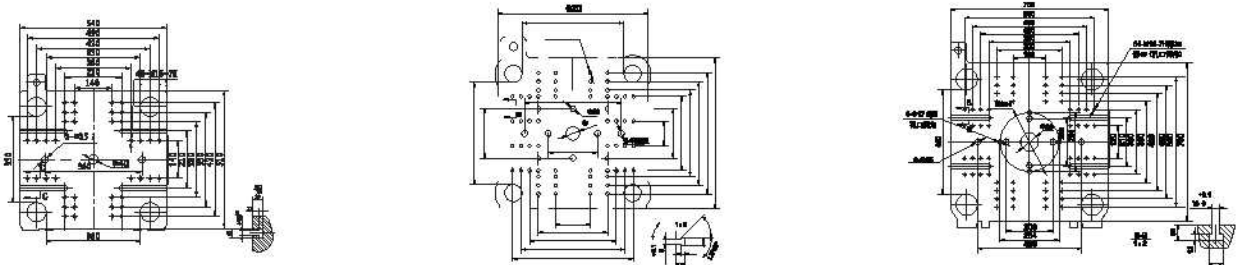


BEST
PERFORMANCE

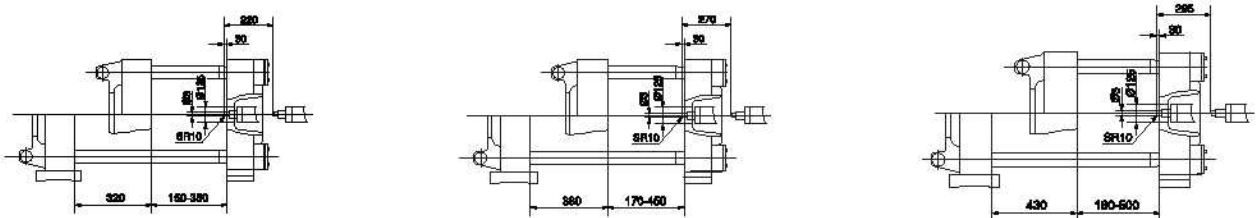
Bitler, a new leader in plastic molding machine.
We are well equipped to ensure the best quality!

Specification		BLF100			BLF140			BLF180			
		A	B	C	A	B	C	A	B	C	
Injection Unit	Screw Diameter	Mm	32	35	38	38	42	45	42	45	50
	Screw L/D Ratio	L/D	22	20.1	18.5	22.1	21.6	19.5	22.5	20	18.8
	Shot Size (Theoretical)	Cm ³	133	160	190	215	263	302	304	349	431
	Injection Weight (PS)	G	121	146	173	193	236	271	274	314	388
	Injection Rate	g/s	81	97	114	94	105	135	105	128	158
	Injection Pressure	Mpa	203	170	144	205	159	140	202	159	140
Clamping Unit	Screw Speed	Rpm	0-225			0-220			0-185		
	Clamp Tonnage	KN	1000			1400			1800		
	Toggle Stroke	Mm	320			380			450		
	Space Between Tie Bars	Mm	360 x 330			420 x 420			480 x 480		
	Max. Mold Height	Mm	350			450			550		
	Min. Mold Height	Mm	150			170			180		
Others	Ejector Stroke	Mm	90			120			130		
	Ejector Tonnage	KN	30			33			45		
	Max. Pump Pressure	Mpa	16			16			16		
	Pump Motor Power	kW	11			13			15		
	Heater Power	kW	7.55			7.2			7.5		
	Motor Power	kW	11.4			15.3			19.2		
	Machine Dimension (LxWxH)	M	3.9 x 1.19 x 1.79			4.5 x 1.2 x 1.7			5.1 x 1.4 x 1.9		
	Machine Weight	T	2.8			4.2			5.5		
Oil Tank Capacity	L	270			230			240			

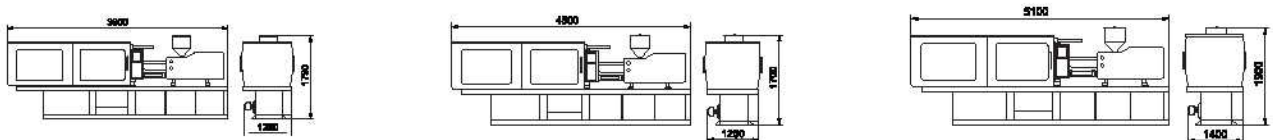
Platen Dimension Face



Mold Space Dimension



Machine Dimension



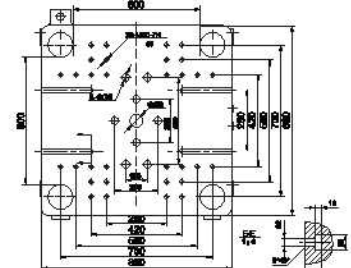
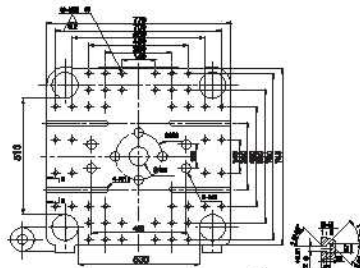
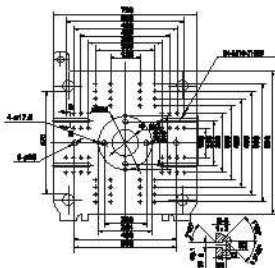
BLF100

BLF140

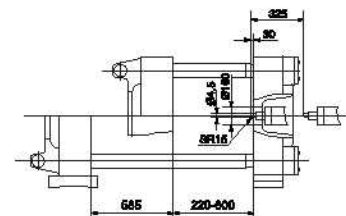
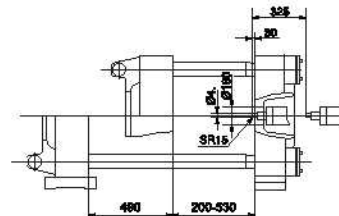
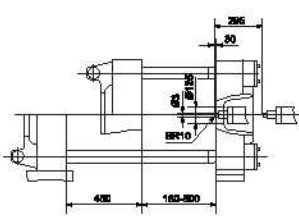
BLF180

Specification			BLF200			BLF240			BLF290		
			A	B	C	A	B	C	A	B	C
Injection Unit	Screw Diameter	Mm	45	50	55	50	55	60	55	60	65
	Screw L/D Ratio	L/D	20	18.8	18.8	22.2	20	18.2	23.1	21	19.3
	Shot Size (Theoretical)	Cm ³	349	431	522	508	593	709	712	847	994.9
	Injection Weight (PS)	G	314	388	470	462	534	642	648	779.9	905
	Injection Rate	g/s	136	170	185	148	179	202	210	240	270
	Injection Pressure	Mpa	220	180	150	180	160.8	128	205	168	143
Clamping Unit	Screw Speed	Rpm	0-185			0-180			0-180		
	Clamp Tonnage	KN	2000			2400			2900		
	Toggle Stroke	Mm	450			490			585		
	Space Between Tie Bars	Mm	500 x 470			530 x 510			600 x 600		
	Max. Mold Height	Mm	550			550			610		
	Min. Mold Height	Mm	180			200			220		
Others	Ejector Stroke	Mm	130			165			150		
	Ejector Tonnage	KN	45			70			75		
	Max. Pump Pressure	Mpa	16			16			16		
	Pump Motor Power	kW	18.5			18.5			30		
	Heater Power	kW	7.5			11.65			15		
	Motor Power	kW	25.1			25.1			27.8		
	Machine Dimension (LxWxH)	M	5.3 x 1.4 x 1.9			5.4 x 1.5 x 2			6.0 x 1.6 x 2.1		
	Machine Weight	T	5.8			7			8.5		
	Oil Tank Capacity	L	240			340			570		

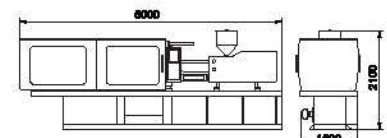
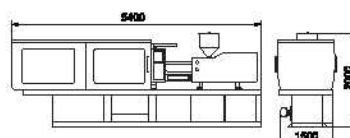
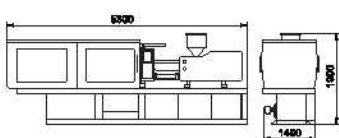
Platen Dimension Face



Mold Space Dimension



Machine Dimension



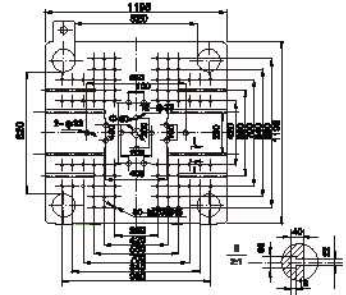
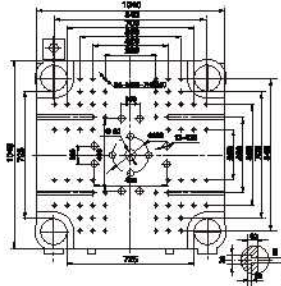
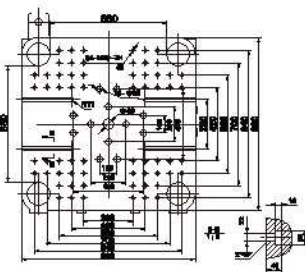
BLF200

BLF240

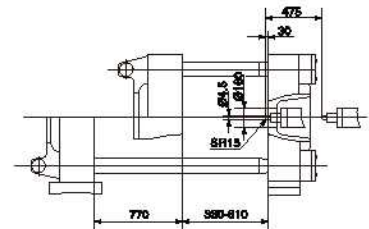
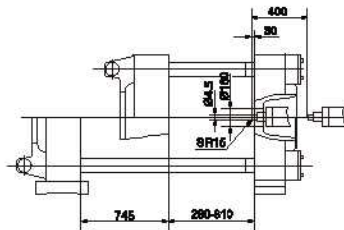
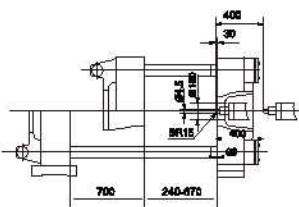
BLF290

Specification			BLF360				BLF400				BLF530						
			A	B	C	D	A	B	C	D	A	B	C	D			
Injection Unit	Screw Diameter	Mm	60	65	70	75	70	75	80	85	75	80	85	100			
	Screw L/D Ratio	L/D	22.6	21.2	19.4	18.5	22	20.5	19.25	17.8	22.7	21	20	17.5			
	Shot Size (Theoretical)	Cm ³	960	1128	1306	1480	184	1589	1808	2098	1727	1965	2218	2904			
	Injection Weight (PS)	G	873	1026	1180	1346	1246	1430	1627	1888	1560	1788	2018	2614			
	Injection Rate	g/s	239	275	328	420	382	438	499	530	386	442	499	625			
	Injection Pressure	Mpa	213	183	160	146	200	174	155	130	191	168	148	115			
	Screw Speed	Rpm		0-180					0-160					130			
	Clamp Tonnage	KN		1600					4000					5300			
	Toggle Stroke	Mm		700					745					820			
	Space Between Tie Bars	Mm		680 x 680					725 x 725					820 x 820			
Clamping Unit	Max. Mold Height	Mm		700					830					830			
	Min. Mold Height	Mm		240					280					330			
	Ejector Stroke	Mm		175					170					240			
	Ejector Tonnage	KN		90					110					150			
	Max. Pump Pressure	Mpa		16					16					16			
	Pump Motor Power	kW		37					37					45			
Others	Heater Power	kW		22.5					30.5					34.7			
	Motor Power	kW		28.8					38.9					55.2			
	Machine Dimension (LxWxH)	M		6.3 x 1.9 x 2.4					7 x 1.9 x 2.4					8.4 x 1.92 x 2.76			
	Machine Weight	T		12					14.5					20			
	Oil Tank Capacity	L		620					750					900			

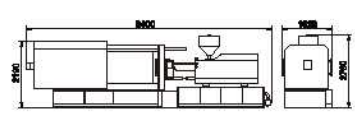
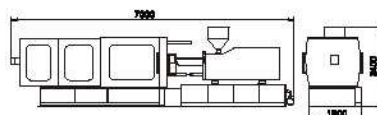
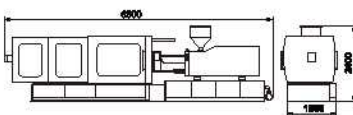
Platen Dimension Face



Mold Space Dimension



Machine Dimension



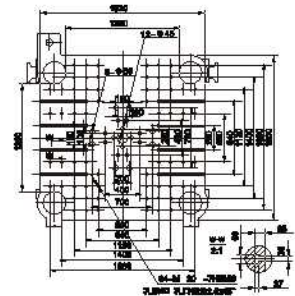
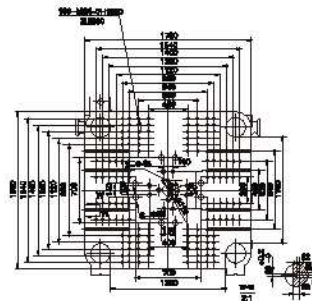
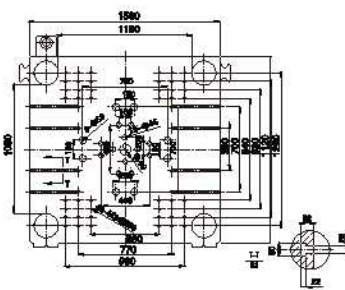
BLF360

BLF400

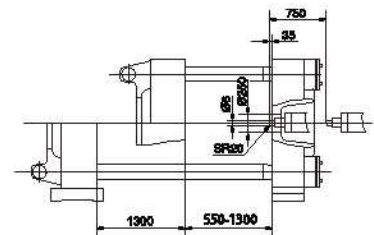
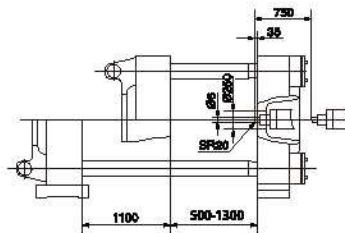
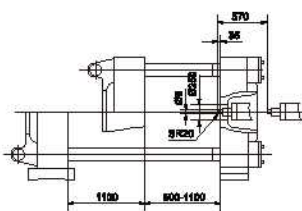
BLF530

Specification			BLF1000				BLF1300				BLF1400			
			A	B	C	D	A	B	C	D	A	B	C	D
Injection Unit	Screw Diameter	Mm	95	105	115	125	100	110	120	130	110	120	130	140
	Screw L/D Ratio	L/D	23	22	20	18.6	23	22	20	18.6	26.2	24	21	20.2
	Shot Size (Theoretical)	Cm ³	3613	4413	5294	6255	4553	5514	6556	7694	5414	6443	7561	8770
	Injection Weight (PS)	G	3251	3972	4765	5629	4097	4958	5900	5925	4872	5798	6805	7893
	Injection Rate	g/s	580	708	850	930	590	720	867	948	793	867	944	1024
	Injection Pressure	Mpa	210	162	133	120	211	174	146	125	205	170	143	123
	Screw Speed	Rpm		115				100				90		
Clamping Unit	Clamp Tonnage	KN		10000				13000				14000		
	Toggle Stroke	Mm		1100				1300				1300		
	Space Between Tie Bars	Mm		1120 x 1080				1260 x 1160				1350 x 1250		
	Max. Mold Height	Mm		1150				1300				1300		
	Min. Mold Height	Mm		500				500				550		
	Ejector Stroke	Mm		350				360				325		
	Ejector Tonnage	KN		200				215				215		
Others	Max. Pump Pressure	Mpa		16				16				16		
	Pump Motor Power	kW		45 + 45				55 + 55				55 + 55		
	Heater Power	kW		58				89				85.25		
	Motor Power	kW		27.8 + 38.9 + 38.9				38.9 + 38.9 + 38.9				38.9 + 55.2 + 55.2		
	Machine Dimension (LxWxH)	M		12 x 2.8 x 3.14				12.1 x 2.9 x 3.2				13.1 x 3.0 x 3.2		
	Machine Weight	T		45				53				60		
	Oil Tank Capacity	L		1800				2206				2400		

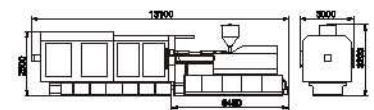
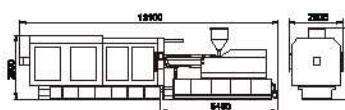
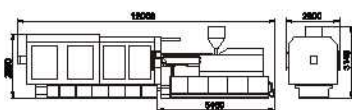
Platen Dimension Face



Mold Space Dimension



Machine Dimension



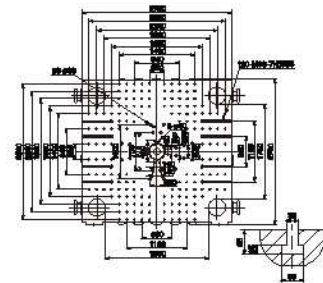
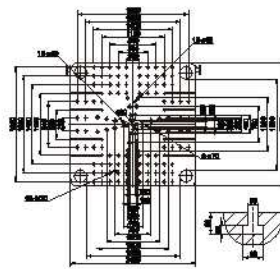
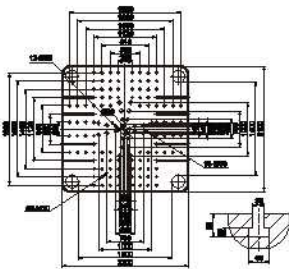
BLF1000

BLF1300

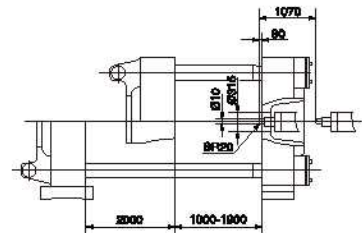
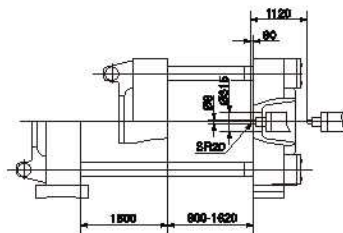
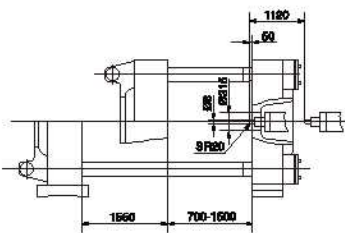
BLF1400

Specification			BLF1660				BLF2000				BLF3000			
			A	B	C	D	A	B	C	D	A	B	C	
Injection Unit	Screw Diameter	Mm	120	130	140	150	130	140	150	160	180	210	220	
	Screw L/D Ratio	L/D	25.4	23.4	21.7	18.9	25.9	24	22.4	20.9	24	24	22.9	
	Shot Size (Theoretical)	Cm ³	7368	8759	10159	11662	9460	11238	12900	14678	29390	40003	43904	
	Injection Weight (PS)	G	6704	7970	9244	10612	8608	10226	11739	13356	26745	36402	39953	
	Injection Rate	g/s	1056	1240	1438	1650	1172	1360	1560	1776	1468	2000	2200	
	Injection Pressure	Mpa	195	165	145	126	190	163	140	125	210	155	141	
	Screw Speed	Rpm		85				70				50		
Clamping Unit	Clamp Tonnage	KN		16600				20000				30000		
	Toggle Stroke	Mm		1550				1600				2000		
	Space Between Tie Bars	Mm		1500 x 1400				1650 x 1500				1900 x 1750		
	Max. Mold Height	Mm		1500				1620				1900		
	Min. Mold Height	Mm		700				800				1000		
	Ejector Stroke	Mm		420				420				450		
	Ejector Tonnage	KN		420				490				565		
Others	Max. Pump Pressure	Mpa		17.5				16.5				16		
	Pump Motor Power	kW		45 + 45 + 45				45 + 55 + 55				55 + 55 + 55 + 55		
	Heater Power	kW		94.9				110.7				177		
	Motor Power	kW		55.2 + 55.2 + 55.20				55.2 + 55.2 + 55.2 + 55.2				55.2 + 55.2 + 55.2 + 55.2		
	Machine Dimension (LxWxH)	M		16.35 x 3.15 x 4.17				17.80 x 3.35 x 4.28				22.00 x 5.50 x 5.00		
	Machine Weight	T		125				156				220		
	Oil Tank Capacity	L		3000				3700				4500		

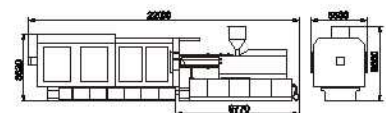
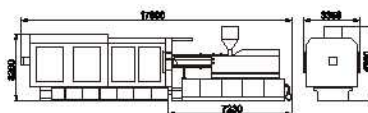
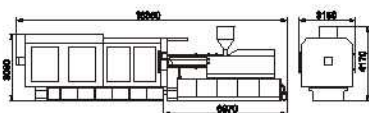
Platen Dimension Face



Mold Space Dimension



Machine Dimension



BLF1660

BLF2000

BLF3000

W SERIES

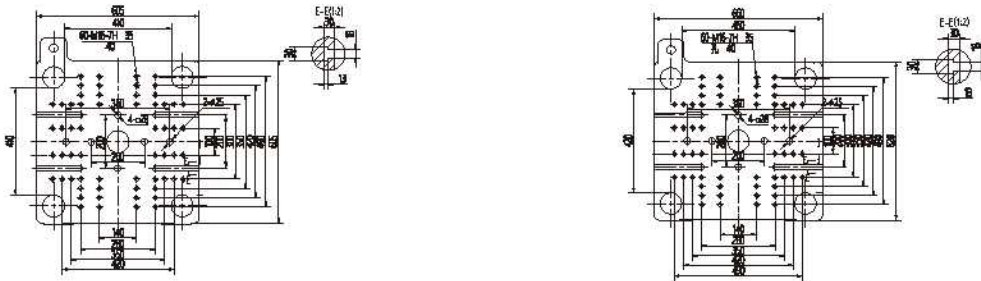
INJECTION MOLDING MACHINE



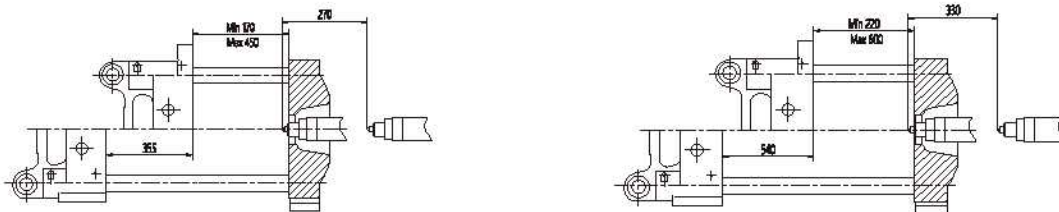
*Bitler would help you to promote
the comprehensive enterprise
competitiveness*

Specification			BLW120			BLW160		
			A	B	C	A	B	C
Injection Unit	Screw Diameter	Mm	38	40	42	40	42	45
	Screw L/D Ratio	L/D	22.3	21.2	20.1	22.5	21.5	20
	Shot Size (Theoretical)	Cm ³	215	239	263	282	304	394
	Injection Weight (PS)	G	193	215	236	254	274	314
	Injection Rate	g/s	94	104	114	97	108	128
	Injection Pressure	Mpa	208	188	170	214	202	159
	Screw Speed	Rpm		0-220			0-185	
Clamping Unit	Clamp Tonnage	KN		1200			1600	
	Toggle Stroke	Mm		355			430	
	Space Between Tie Bars	Mm		410 x 410			460 x 420	
	Max. Mold Height	Mm		450			500	
	Min. Mold Height	Mm		170			180	
	Ejector Stroke	Mm		100			130	
	Ejector Tonnage	KN		33			45	
Others	Max. Pump Pressure	Mpa		16			16	
	Pump Motor Power	kW		13			15	
	Heater Power	kW		7.45			10.5	
	Motor Power	kW		15.3			19.2	
	Machine Dimension (LxWxH)	M		4.5 x 1.2 x 1.7			5.1 x 1.4 x 1.9	
	Machine Weight	T		4.2			5.5	
	Oil Tank Capacity	L		230			240	

Platen Dimension Face



Mold Space Dimension



Platen Dimension Face

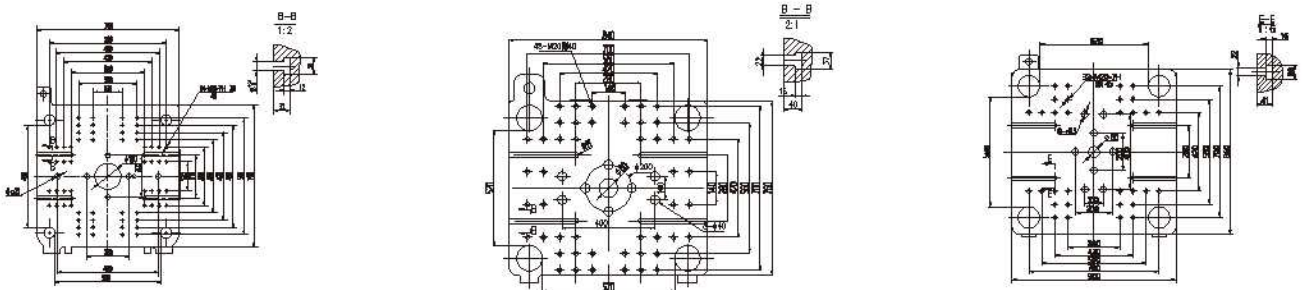


BLW120

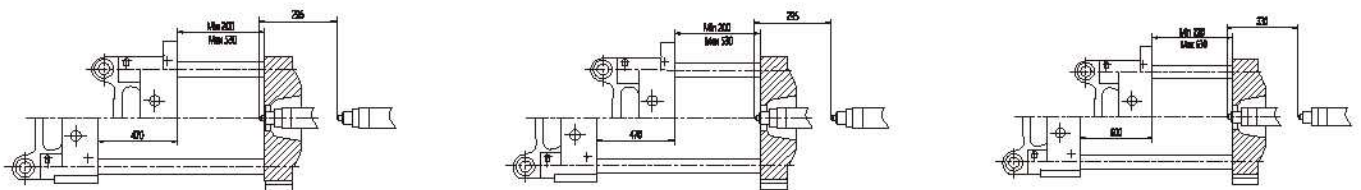
BLW160

Specification			BLW220			BLW260			BLW300			
			A	B	C	A	B	C	A	B	C	
Injection Unit	Screw Diameter	Mm	50	55	60	55	60	65	60	65	70	
	Screw L/D Ratio	L/D	22.2	20	18.2	23.1	21	19.3	21.6	20	18.6	
	Shot Size (Theoretical)	Cm ³	508	593	706	712	847	995	847	995	1153	
	Injection Weight (PS)	G	460	534	642	648	780	905	780	905	1049	
	Injection Rate	g/s	148	179	202	210	240	270	240	270	300	
	Injection Pressure	Mpa	180	160.8	128	205	168	143	195	166	143	
	Screw Speed	Rpm		0-180			0-180			0-180		
Clamping Unit	Clamp Tonnage	KN		2200			2600			3000		
	Toggle Stroke	Mm		470			540			600		
	Space Between Tie Bars	Mm		520 X 480			570 X 520			620 X 580		
	Max. Mold Height	Mm		550			600			630		
	Min. Mold Height	Mm		200			220			220		
	Ejector Stroke	Mm		165			150			150		
	Ejector Tonnage	KN		70			75			75		
Others	Max. Pump Pressure	Mpa		16			16			16		
	Pump Motor Power	kW		18.5			30			30		
	Heater Power	kW		11.65			15			18		
	Motor Power	kW		25.1			27.8			28.8		
	Machine Dimension (LxWxH)	M		5.3 X 1.5 X 2			6.5 X 1.6 X 2.1			6.5 X 1.6 X 2.1		
	Machine Weight	T		7			8.5			8.5		
	Oil Tank Capacity	L		340			570			570		

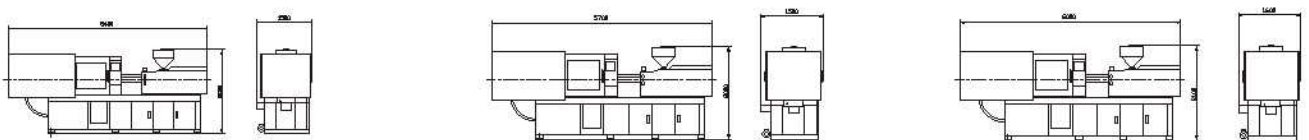
Platen Dimension Face



Mold Space Dimension



Platen Dimension Face



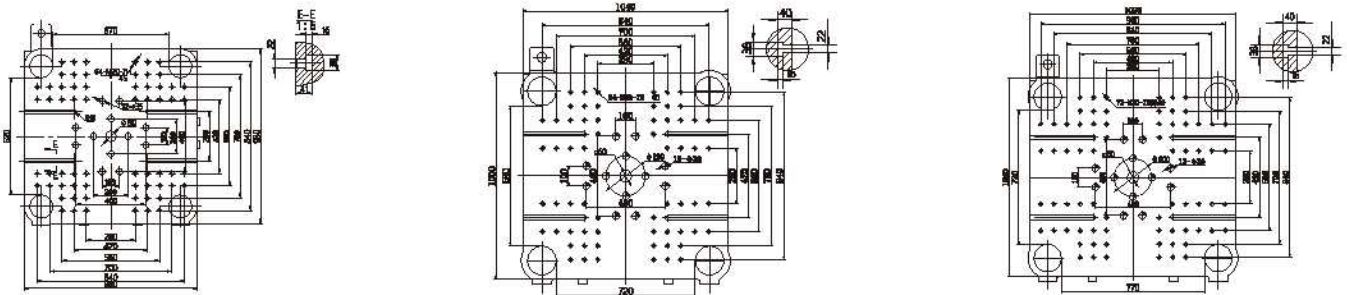
BLW220

BLW260

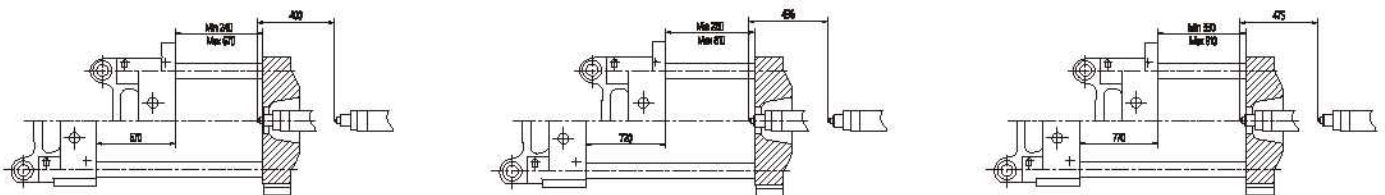
BLW300

Specification		BLW350			BLW390				BLW450				
		A	B	C	A	B	C	D	A	B	C	D	
Injection Unit	Screw Diameter	Mm	65	70	75	70	75	81	85	75	80	85	100
	Screw L/D Ratio	L/D	21.2	19.4	18.2	22	22.5	19.25	17.8	22.7	21	20	17.5
	Shot Size (Theoretical)	Cm ³	1128	1306	1480	1384	1589	1808	2098	1727	1965	2218	2904
	Injection Weight (PS)	G	1026	1180	1346	1246	1430	1627	1888	1560	1788	2018	2614
	Injection Rate	g/s	275	328	420	382	438	499	530	386	442	499	625
	Injection Pressure	Mpa	183	160	146	146	200	174	155	191	168	148	115
	Screw Speed	Rpm	0-180			0-160				0-130			
Clamping Unit	Clamp Tonnage	KN	3500			3900				4500			
	Toggle Stroke	Mm	670			720				770			
	Space Between Tie Bars	Mm	670 X 620			720 X 680				770 X 720			
	Max. Mold Height	Mm	700			830				830			
	Min. Mold Height	Mm	240			280				330			
	Ejector Stroke	Mm	160			170				240			
	Ejector Tonnage	KN	62			110				150			
Others	Max. Pump Pressure	Mpa	17.5			17.5				17.5			
	Pump Motor Power	kW	37			37				45			
	Heater Power	kW	22			28				33			
	Motor Power	kW	28.8			38.9				55.2			
	Machine Dimension (LxWxH)	M	6.5 X 1.9 X 2.4			7 X 1.9 X 2.4				8.4 X 1.92 X 2.76			
	Machine Weight	T	12			14.5				20			
	Oil Tank Capacity	L	600			850				950			

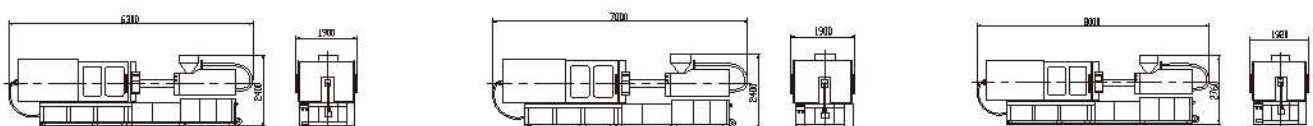
Platen Dimension Face



Mold Space Dimension



Platen Dimension Face



BLW350

BLW390

BLW450



CONFIGURATION OPTION STANDARDS

www.indotara.co.id

The Type of Plastic and Barrel Temperature Setting

Platic Name	Specific Gravity	Melting Point	Shrinkage Ratio	Mould Temperature		Barrel Temperature					
						Nozzle		Middle		End	
				Min	Max	Min	Max	Min	Max	Min	Max
PS	1.07	100	0.4	10	75	180	260	200	260	160	250
HIPS	1.00	100	0.4	5	75	220	270	190	260	160	250
ABS	1.05	110	0.6	50	80	190	250	180	240	170	240
LDPE	0.92	120	1.5-5	35	60	230	310	220	300	170	220
HDPE	0.95	130	2.0-5	35	60	230	310	220	300	170	220
PP	0.91	176	1-2.5	50	80	210	300	180	260	160	240
PVC	1.45	90	0.1-1.5	10	60	170	220	160	295	150	195
PMMA	1.19	100	0.5	50	90	180	230	160	240	140	220
PA6	1.13	216	0.8-1.5	50	80	210	230	210	230	200	210
PA66	1.14	265	2.25	50	80	250	280	240	280	220	280
CA	1.3	230	0.5	40	75	180	200	170	290	150	180
PC	1.2	150	0.8	80	99	250	320	260	340	280	350
POM	1.41	175	2.0	50	90	190	210	175	220	160	210
SAN	1.09	115	0.2	50	80	250	250	180	230	170	220

Standards Features

- + Double-cylinder balance injection system
- + Multi-stage pressure & speed injection
- + Back pressure adjustment device
- + Screw back
- + High speed clamping
- + Low Pressure mold protection
- + Multiple hydraulic ejector knock-out
- + Mechanical, electrical safety device
- + Lubrication system
- + Oil pressure full proportional control
- + Full computer control system
- + Mould memory system

Standards Accessory

- + Mechanical shockproof pad
- + Spare parts
- + Toolbox
- + Operation manual

Optional Features

- + Variable frequency motor driven oil pump
- + Servo motor oil pump
- + Motor-driven proportional pump
- + Servo motor directly drives the screw to plasticize
- + Robot arm
- + Thermoset plastic injection
- + PVC injection
- + BMC Injection
- + Alloy barrel screw

Optional Accessory

- + Air ejector
- + Hopper magnet
- + Mold platen hydraulic
- + Rotary demolding
- + Chiller
- + Dehumidifier
- + Mould temperature controller
- + Plastic masterbatch mixer doser
- + Hopper dryer
- + Auto loader

INDOTARA[®]

PT. INDOTARA PERSADA

Our Marketing Office and After Sales Service Center

Head Office

50/F, Menara BCA Grand Indonesia
Jl. M.H. Thamrin No.1
Jakarta Pusat 10310
021 - 5011 2224
dce@indotara.id



Semarang Office

Wisma HSBC Lt. 6 Suite 609
Jl. Gajah Mada No.135
Semarang, Jawa Tengah 50134
024 - 40 33 88 99
smg.dce@indotara.id



Marketing Office

Graha Kencana Building, Lt.10 Suite 10F
Jl. Raya Perjuangan No. 88,
Kebon Jeruk - Jakarta Barat 11530
021 - 5011 2224
dce@indotara.id



Medan Office

Sutomo Tower Lantai 5H
Jl. Sutomo Ujung No.28,
Kota Medan, Sumatera Utara 20235
061 - 50 300 600
mdn.dce@indotara.id



Graha Indotara

Millenium Industrial Estate
Jl. Millenium 22 Blok R3 No. 1
Cikupa, Tangerang - Banten 15720
021 - 5011 2224
dce@indotara.id



Makassar Office

Fajar Graha Pena Lt. 5
Jl. Urip Sumoharjo No. 20,
Makassar - South Sulawesi 90234
021 - 5011 2224
mks.dce@indotara.id



Bandung Office

Wisma HSBC Lt. 6 Suite B
Jl. Asia Afrika No. 116
Bandung, Jawa Barat 40112
021 - 5011 2224
bdg.dce@indotara.id



Balikpapan Office

Panin Tower Lt. 8 - Grand Sudirman
Jl. Jendral Sudirman No.7 Klandasan Ilir,
Balikpapan Kota, Kalimantan Timur 76114
021 - 5011 2224
bpp.dce@indotara.id



Surabaya Office

Japfa Indoland Center, Tower I Lt. 10/1008
Jl. Jendral Basuki Rahmat 129-137
Surabaya 60271
031 - 3313 3333
sby.dce@indotara.id



Bali Office

Benoa Square Lt. 2
Jl. Bypass Ngurah Rai No. 21 A Kedonganan,
Kuta Badung - Bali Indonesia 80361
021 - 5011 2224
bali.dce@indotara.id



Yogyakarta Office

Hartono Mall Yogyakarta Lt. 3
Kaliwaru, Condongcatur,
Sleman, Yogyakarta 55281
021 - 5011 2224
yog.dce@indotara.id



Singapore Office

Marina Bay Financial Centre Tower 3
17F, 12 Marina Boulevard
Singapore - 018982
021 - 5011 2224
sing.dce@indotara.id

